

# Shifting Abrasives Into High Gear



**EXCLUSIVE TECHNOLOGY.  
UNRIVALED PERFORMANCE.**



NORTON **SG**  
**REDHEAT** 

**NORTON**

EXPANDED OFFERING!

# Paper EDGERS, DISCS, ROLLS

(H955)



Outlast any disc on the market at least 3 to 1 in most application

Able to flatten typical overwood with 80 grit or finer

Scratches are much finer than any other product for very easy blending

Large diameter discs are ideal for hard plating as they leave much less scratches than typical silicon carbide discs



## Edger Discs

PART NUMBER	GRIT	QTY.
<b>5-7/8" X 0 HOOK &amp; LOOP</b>		
662610 78093	4 120	25
662610 78094	1 100	25
662610 78095	8 80	25
662610 78096	5 60	25
662610 78097	2 50	25
662610 78098	9 40	25
662610 78099	6 36	25
662610 78100	9 24	25
<b>6-7/8" X 7/8"</b>		
662610 55950	9 120	25
662610 55951	6 100	25
662610 55952	3 80	25
662610 55953	0 60	25
662610 55954	7 50	25
662610 55955	4 40	25
662610 55956	1 36	25
662610 55957	8 24	25
<b>7" X 5/16"</b>		
662610 55958	5 120	25
662610 55959	2 100	25
662610 55960	8 80	25
662610 55961	5 60	25
662610 55962	2 50	25
662610 55963	9 40	25
662610 55964	6 36	25
662610 55965	3 24	25
<b>7" X 7/8"</b>		
662610 55966	0 120	25
662610 40283	6 100	25
662610 40284	3 80	25
662610 40285	0 60	25
662610 55967	7 50	25
662610 55968	4 40	25
662610 40286	7 36	25
662610 55969	1 24	25
<b>7" X 0 HOOK &amp; LOOP</b>		
662610 78101	6 120	25
662610 78102	3 100	25
662610 78103	0 80	25
662610 78104	7 60	25
662610 78105	4 50	25
662610 78106	1 40	25
662610 78107	8 36	25
662610 78108	5 24	25

## Trio Discs

PART NUMBER	GRIT	QTY.
<b>8" X 0 HOOK &amp; LOOP</b>		
662610 78109	2 120	30
662610 78110	8 100	30
662610 78111	5 80	30
662610 78112	2 60	30
662610 78113	9 50	30
662610 78114	6 40	30
662610 78115	3 36	30
662610 78116	0 24	30

## Large Diameter Discs

PART NUMBER	GRIT	QTY.
<b>16" DISCS</b>		
662610 55759	8 120	10
662610 55760	4 100	10
662610 55762	8 80	10
662610 55827	4 60	10
662610 55828	1 50	10
662610 55829	8 40	10
662610 55830	4 36	10
662610 55831	1 24	10

## Rolls

PART NUMBER	GRIT	QTY.
<b>8" X 50 YD. ROLLS</b>		
662610 55940	0 120	1
662610 55939	4 100	1
662610 55938	7 80	1
662610 55937	0 60	1
662610 55936	3 50	1
662610 55935	6 40	1
662610 55934	9 36	1
662610 55933	2 24	1
<b>12" X 50 YD. ROLLS</b>		
662610 55948	6 120	1
662610 55947	9 100	1
662610 55946	2 80	1
662610 55945	5 60	1
662610 55944	8 50	1
662610 55943	1 40	1
662610 55942	4 36	1
662610 55941	7 24	1



**NORTON SG**  
**REDHEAT**  
 EXTRA  
**THE MUSCLE BEHIND THE MACHINE™**

## paper

### Features

- 100% patented Seeded Gel (SG) ceramic grain
- Heavier F-weight paper backing
- Anti-Stat treatment

### Benefits

- Exceptionally sharp for fast coating removal
- Less loading and longer life
- Produces finer scratch pattern for a better looking floor
- Stiffer backing cuts more aggressively
- Resists tearing and snagging
- Eliminates static charge on sanding dust for a cleaner finish

# Cloth BELTS, ROLLS

(R955)



Provide significant increase in square foot coverage, sanding anywhere from 1,000 – 3,000 square feet

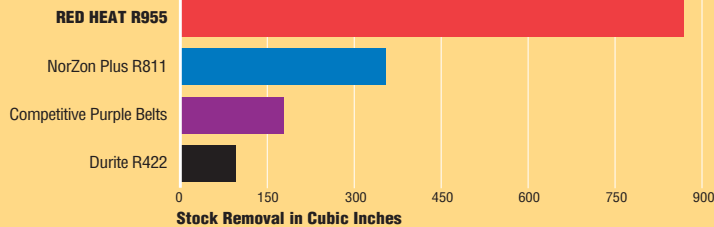
Provide a cut so aggressive you can flatten the floor using one or two grits finer than any other belt

Cut through A/O pre-finished flooring with ease and minimal belt consumption

Create the finest scratch pattern in the industry, producing the most scratch-free floor of any abrasive

### Total Cut Rate of Floor Belts – 60 Grit

Mode of failure on all items was load and burn except the Red Heat. Red Heat test was halted at 247 cuts with no evidence of loading.



## Belts

SIZE	GRIT	EA/CS
<b>7-7/8" x 29-1/2"</b>		
699573 45027	7	120 5
699573 45028	4	100 5
699573 45029	1	80 5
699573 45030	7	60 5
699573 45031	4	50 5
699573 45032	1	40 5
699573 45033	8	36 5
699573 45034	5	24 5
<b>8" x 19"</b>		
FT 636425 95807	9	120 5
FT 636425 95806	2	100 5
FT 636425 95805	5	80 5
FT 636425 95804	8	60 5
FT 636425 95803	1	50 5
FT 636425 95802	4	40 5
FT 636425 95801	7	36 5
FT 636425 95800	0	24 5
<b>9-7/8" x 29-1/2"</b>		
699573 46299	7	120 5
699573 46298	0	100 5
699573 46297	3	80 5
699573 46296	6	60 5
699573 46295	9	50 5
699573 46294	2	40 5
699573 46293	5	36 5
699573 46292	8	24 5

FT = Fast Track Item

SIZE	GRIT	EA/CS
<b>11-7/8" x 21-11/16"</b>		
FT 699573 92506	5	100 5
FT 699573 92505	8	80 5
FT 699573 92504	1	60 5
FT 699573 92503	4	50 5
FT 699573 92502	7	40 5
FT 699573 92501	0	36 5
FT 699573 92500	3	24 5
<b>11-7/8" X 29-1/2"</b>		
699573 45035	2	120 5
699573 45036	9	100 5
699573 45037	6	80 5
699573 45038	3	60 5
699573 45039	0	50 5
699573 45040	6	40 5
699573 45041	3	36 5
699573 45042	0	24 5

SIZE	GRIT	EA/CS
<b>11-7/8" X 31-1/2"</b>		
FT 636425 92878	2	120 5
FT 636425 92879	9	100 5
FT 636425 92880	5	80 5
FT 636425 92881	2	60 5
FT 636425 92882	9	50 5
FT 636425 92883	6	40 5
FT 636425 92884	3	36 5
FT 636425 92885	0	24 5
<b>11-7/8" X 33"</b>		
FT 699573 46812	8	120 5
FT 699573 46811	1	100 5
FT 699573 46810	4	80 5
FT 699573 46809	8	60 5
FT 699573 46808	1	50 5
FT 699573 46807	4	40 5
FT 699573 46806	7	36 5
FT 699573 46805	0	24 5

## Rolls

SIZE	GRIT	EA/CS
<b>8" x 25 YD</b>		
662611 83283	0	120 1
662611 83284	7	100 1
662611 83285	4	80 1
662611 83286	1	60 1
662611 83287	8	50 1
662611 83288	5	40 1
662611 83289	2	36 1
662611 83290	8	24 1
<b>12" x 25 YD</b>		
662611 83291	5	120 1
662611 83292	2	100 1
662611 83293	9	80 1
662611 83294	6	60 1
662611 83295	3	50 1
662611 83296	0	40 1
662611 83297	7	36 1
662611 83298	4	24 1

## Proven Performance

*"The belts lasted 3-4 times longer than Durite with a more aggressive cut. Very good belt."*

– JOHN ROY REID, TRINITY HARDWOOD

*"It was cutting faster than anything else I had used before."*

– MATT VANSICKLE, VANSICKLE HARDWOOD FLOORS

*"It pretty much changed the way we do business."*

– JEFF WILSON, WILSON FLOOR SANDING SERVICE



## cloth

### Features

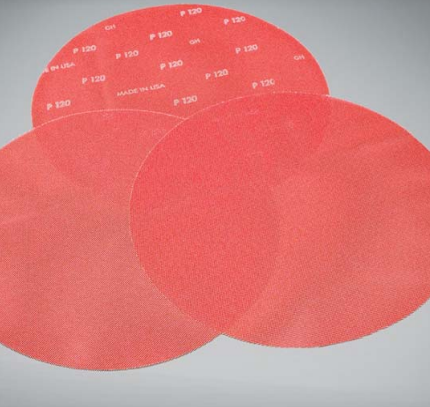
- 100% patented SG (Seeded Gel) ceramic grain
- Full phenolic resin bond
- Patent pending color technology
- Heavy X-weight polyester backing

### Benefits

- Unmatched cut rate and product life with optimum resistance to wear with razor abrasive sharp micro-fracturing capabilities that prevent premature dulling or wearing
- Excellent cutting ability on A/O or ceramic finishes
- Ideal for harder wood species and large jobs where saving time means saving money
- Heat and chip resistant
- Eliminates risk of color transfer with stabilizer assured product color consistency
- Extremely flexible and shock absorbent for extreme conditions
- Atmospherically stable with little or no effect from moisture or heat

# Screen DISCS, SHEETS

(Q955)



Last anywhere from 900 – 2,000 square feet

Scratches left from the screen are minimal and will produce the best looking floor

The best product for harder species of wood

## FAQ'S Frequently Asked Questions



### **Are Red Heat Screens designed to be used between coats of finish?**

Yes, Red Heat Screens cut faster than conventional silicon carbide but they don't cut deeper. So you can use the same grit size and move the buffer a little faster based on your feel for the floor because of the Red Heat Screens' speed of cut – which gets the job done quicker.

### **Can Red Heat Screens be used to scratch a pre-finished floor to prepare for recoating?**

Red Heat Screens will put a sufficient scratch into the pre-finished flooring but we do not endorse the procedure. The issue is the inconsistency of the floor itself as high spots in the floor tend to get over sanded and the low spots are not sanded enough so the floor is not properly prepped for the next coat of finish.

### **Are Red Heat Screens worth the added cost in comparison to silicon carbide?**

Yes, silicon carbide screens will last for approximately 375 sq. ft. and Red Heat Screens will cover between 900 and 2,000 sq. ft. We recently supplied Red Heat Screens for a job at Disney World's Wide World of Sports where they screened 18,000 square feet with 6 screens.

### **What makes Red Heat Screens last so much longer?**

Longer life is attributed to many factors. First, the sharpness of the grain cuts the wood easier so it doesn't have to work as hard allowing it to last longer. Second, the ceramic grain micro-fractures as it breaks down preserving the majority of the grain for a longer period of time. Silicon carbide macro-fractures in big chunks allowing it to only fracture 3 – 5 times versus the ceramic grain that can break down dozens of times. The third reason is the symmetrical shape of the grain which assures that a sharp point is always sticking out. This differs from silicon carbide which is a long, spindly shaped grain that can sometimes lay flat on the mesh backing.

### **Is the ceramic grain dissipating the heat or is the heat not a factor with low speed buffers?**

The Red Heat Screens will cut faster and use less power to do the same work, but because the buffer moves at such a slow rotational speed there is not a great deal of heat generated.

### **Why do Red Heat Screens perform better on harder species of wood?**

The ceramic grain works better when sanding harder surfaces such as Brazilian Walnut or Cherry and Hickory because it always has a sharp edge so it cuts the harder material easier. Red Heat Screen also excels on soft woods since the open mesh allows material to pass through rather than loading on the surface.

### **How can the scratch pattern be finer when the grit size is the same as other screens?**

The scratch pattern is determined by the shape of the grain. Since silicon carbide is a long, spindly shaped grain it can impress a much deeper scratch pattern if sticking straight out from the backing of the abrasive. The symmetrical shape of the Norton SG ceramic grain cuts very fast due to its sharpness, but it doesn't cut very deep because the grain itself doesn't penetrate as deep. It also takes less power to cut using ceramic grain because it doesn't have as much friction.

## Large Diameter Discs

SIZE	GRIT	EA/CS
<b>15"</b>		
662610 26292 8	150	10
662610 26293 5	120	10
662610 26295 9	100	10
662610 26296 6	80	10
<b>16"</b>		
662610 26297 3	150	10
662610 26299 7	120	10
662610 26300 0	100	10
662610 26301 7	80	10
<b>17"</b>		
662610 26302 4	150	10
662610 26303 1	120	10
662610 26304 8	100	10
662610 26305 5	80	10
<b>18"</b>		
NS 662610 26306 2	150	10
NS 662610 26307 9	120	10
NS 662610 26308 6	100	10
NS 662610 26309 3	80	10
<b>20"</b>		
NS 662610 26311 6	150	10
NS 662610 26312 3	120	10
NS 662610 26313 0	100	10
NS 662610 26314 7	80	10

## Trio Discs

SIZE	GRIT	EA/CS
<b>7-7/8" X 3/16"</b>		
NS 662610 81826 2	150	30
NS 662610 81824 8	120	30
NS 662610 81822 4	100	30
NS 662610 81820 0	80	30

## Sheets

SIZE	GRIT	EA/CS
<b>12" X 18"</b>		
NS 662610 44748 6	150	10
NS 662610 44746 2	120	10
NS 662610 44745 5	100	10
NS 662610 44742 4	80	10

NS = Non Stock Item

## screen

### Features

- 100% patented SG (Seeded Gel) ceramic grain

### Benefits

- Extremely sharp and fast cutting
- 2-3 times the life of silicon carbide
- Produces much finer scratch pattern than silicon carbide
- Perfect on harder wood species

- Inter-woven polyester knit backing

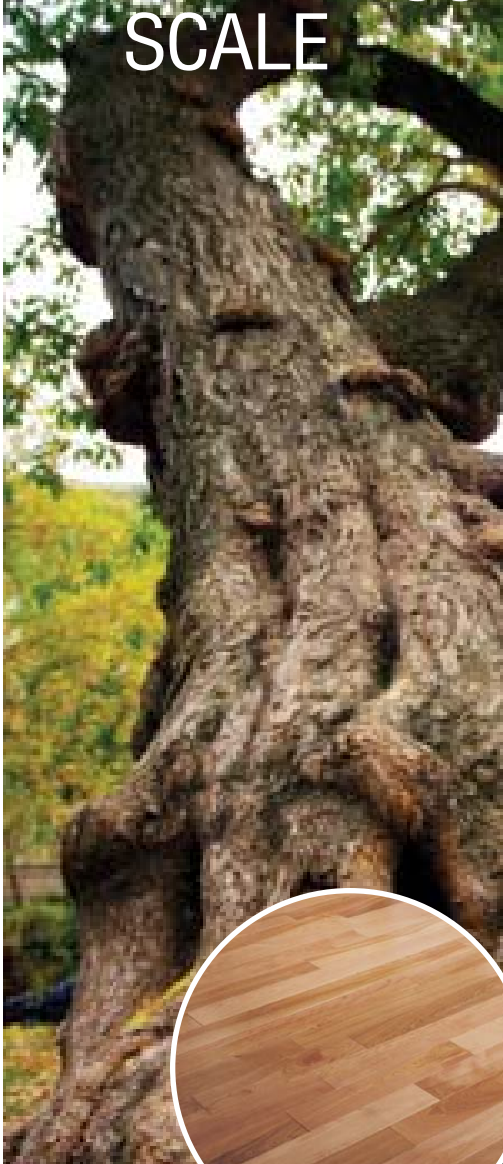
- Increased durability and life

- Full resin bond

- Excellent grain retention

**NORTON**

# JANKA HARDNESS SCALE



## Wood Flooring Species Measurement Criteria

The Janka hardness test is a measurement of the force necessary to embed a .444-inch steel ball to half its diameter in wood. It is the industry standard for gauging the ability of various species to tolerate denting and normal wear, as well as being a good indication of the effort required to either nail or saw the particular wood.

**NORTON**

WOOD SPECIES	HARDNESS	PRODUCT
<b>IMPORTED WOODS</b>		
IPE / BRAZILIAN WALNUT / LAPACHO	3684	<b>Choose Red Heat</b>
CUMARU / BRAZILIAN TEAK	3540	
EBONY	3220	
BRAZILIAN REDWOOD / PARAJU	3190	
ANGELIM PEDRA	3040	
BLOODWOOD	2900	
RED MAHOGANY, TURPENTINE	2697	
SPOTTED GUM	2473	
BRAZILIAN CHERRY / JATOBA	2350	
MESQUITE	2345	
SANTOS MAHOGANY, BOCOTE, CABREUVA	2200	
PRADOO	2170	
BRUSHBOX	2135	
KARRI	2030	
SYDNEY BLUE GUM	2023	
BUBINGA	1980	
CAMERON	1940	
TALLOWWOOD	1933	
MERBAU	1925	
AMENDOIM	1912	
JARRAH	1910	
PURPLEHEART	1860	
GONCALO ALVES / TIGERWOOD	1850	
HICKORY / PECAN / SATINWOOD	1820	
AFZELIA / DOUSSIE	1810	
BANGKIRAI	1798	
ROSEWOOD	1780	
AFRICAN PADAUK	1725	
BLACKWOOD	1720	
MERBAU	1712	
KEMPAS	1710	
LOCUST	1700	
HIGHLAND BEECH	1686	
WENGE, RED PINE	1630	
TUALANG	1624	
ZEBRAWOOD	1575	
TRUE PINE, TIMBORANA	1570	
PEROBA	1557	
KAMBALA	1540	
SAPELE / SAPELLI	1510	
CURUPIXA	1490	
SWEET BIRCH	1470	
<b>COMMON HARDWOODS</b>		
HARD MAPLE / SUGAR MAPLE	1450	<b>Choose Red Heat</b>
COFFEE BEAN	1390	
NATURAL BAMBOO (REPRESENTS ONE SPECIES)	1380	
AUSTRALIAN CYPRESS	1375	
WHITE OAK	1360	
TASMANIAN OAK	1350	
RIBBON GUM	1349	
ASH (WHITE)	1320	
AMERICAN BEECH	1300	
RED OAK (NORTHERN)	1290	
<b>SOFTER HARDWOODS</b>		
CARRIBEAN HEART PINE	1280	<b>Choose NorZon Plus</b>
YELLOW BIRCH	1260	
MOVINGUI	1230	
HEART PINE	1225	
CARBONIZED BAMBOO (REPRESENTS ONE SPECIES)	1180	
COCOBOLO	1136	
BRAZILIAN EUCALYPTUS / ROSE GUM	1125	
MAKORE	1100	
BOREAL	1023	
BLACK WALNUT	1010	
TEAK	1000	
SAKURA	995	
BLACK CHERRY, IMBUJA	950	
BOIRE	940	
PAPER BIRCH	910	
CEDAR	900	
SOUTHERN YELLOW PINE (LONGLEAF)	870	
LACEWOOD, LEOPARDWOOD	840	
PARANA	780	
SYCAMORE	770	
SHEDUA	710	
SOUTHERN YELLOW PINE (LOBLOLLY AND SHORTLEAF)	690	
DOUGLAS FIR	660	
LARCH	590	
CHESTNUT	540	
HEMLOCK	500	
WHITE PINE	420	
BASSWOOD	410	
EASTERN WHITE PINE	380	

HARDER

SOFTER

# THE MUSCLE BEHIND THE MACHINE

## Norton Product Tiering



**BEST**

**NORTON SG  
REDHEAT**

**Exclusive Technology.  
Unrivaled Performance.**



**BETTER**

**NORTON PLUS**

**Superior Performance.  
High Productivity.**



**GOOD**

**DURITE**

**Quality Without  
Compromise.**



**Full Wrap Red Heat  
Carton Graphics for  
Easy Stocking and  
Selection**



**Anti-Vibe Gloves –  
Call for Details**

**Larry Placer from Pro-One Floor Sanding was the proud winner of the Harley-Davidson 2007 Sportster in Norton SG Red Heat promotion!**

The grand prize was drawn at the NWFA show in April 2007. Larry (right) is shown with Matt Ward the Norton Mideast sales supervisor, receiving his prize at the Warren, Ohio Harley-Davidson shop. Backstreet sunglasses and Burk's Bay leather jackets were also awarded as prizes.



Harley-Davidson Motor Company did not endorse, sponsor or have any affiliation with the promotion.



**U.S. CUSTOMER SERVICE:**  
Saint-Gobain Abrasives, Inc.  
2770 W. Washington Street  
Stephenville, TX 76401  
Phone: (254) 918-2306  
Fax: (254) 918-2309

**CANADA CUSTOMER SERVICE:**  
Saint-Gobain Abrasives Canada Inc.  
3 Beach Road  
Hamilton, ON L8L 7Y5  
Phone: (905) 547-2551  
Fax: (905) 547-2173

**MARKETING:**  
Saint-Gobain Abrasives, Inc.  
2050 Cory Rd.  
Sanborn, NY 14132  
Phone: (716) 731-7770  
Fax: (716) 731-2467

© Saint-Gobain Abrasives, Inc. October 2007  
The Norton logo, Durite, Norton SG and NorZon Plus are registered trademarks and Red Heat is a trademark of Saint-Gobain Abrasives

**FORM #DIY66 ANF 10/07**

